



Haltwhistle Burn PhD Project

South Tyne Wildlife Group

11th February 2014



Presenter: Eleanor Starkey (PhD Student)

Supervisors: Dr Geoff Parkin, Dr Paul Quinn & Dr Andy large

TRT CRF Project Manager: Dr Ceri Gibson

Purpose of my talk tonight

Introduce myself



Quick background to my PhD project



Progress to date & resources



Community monitoring – would you like to be a citizen scientist?

A bit about myself..

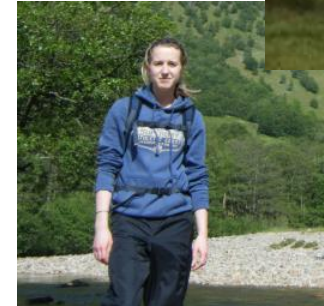
- Project awarded to Eleanor Starkey
 - BSc Physical Geography
 - MSc Hydrology & Climate Change
 - Relevant work experience
- PhD – research project for 3 years



School of
**Civil Engineering
& Geosciences**



**Water
Resources**



My PhD research project

- Funded by NERC and TRT
- Focus on the Haltwhistle Burn
 - Contribute to CRF deliverables
- Apply in other catchments Year 2 & 3



Artwork by Alex Hall

“Community monitoring and modelling for catchment management and restoration within the UK”

“Community monitoring and modelling for catchment management and restoration within the UK”



3rd February 2014

Weather extremes



Catchment response

**NEED
EVIDENCE
(data)**

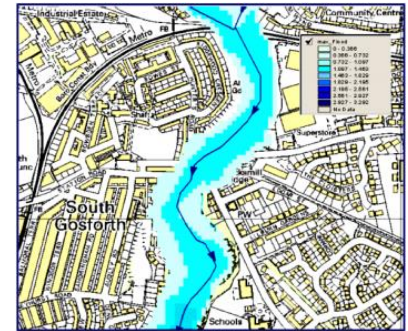
“..in 2007,
2012 & again
2013..”



“Community monitoring and modelling for catchment management and restoration within the UK”

Investigate the potential for..

- Community monitoring
- Community modelling

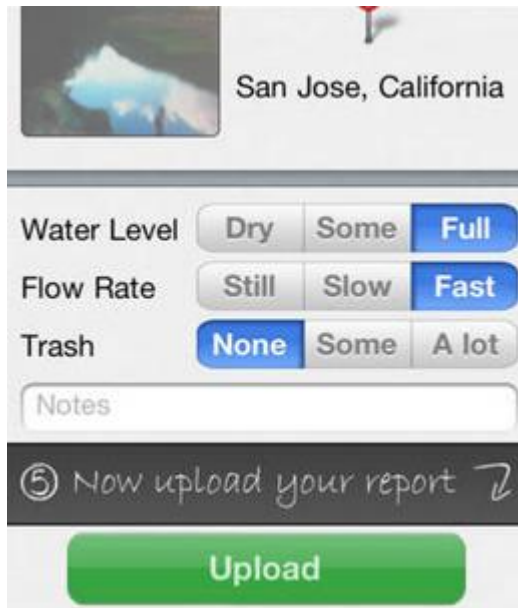


..to support catchment management & restoration



Examples of Citizen Science Projects..

Creek Watch



San Jose, California

Water Level: ☐ Dry ☐ Some ☒ Full

Flow Rate: ☐ Still ☐ Slow ☒ Fast

Trash: ☒ None ☐ Some ☐ A lot

Notes

⑤ Now upload your report ↗

Upload

CoCoRaHS



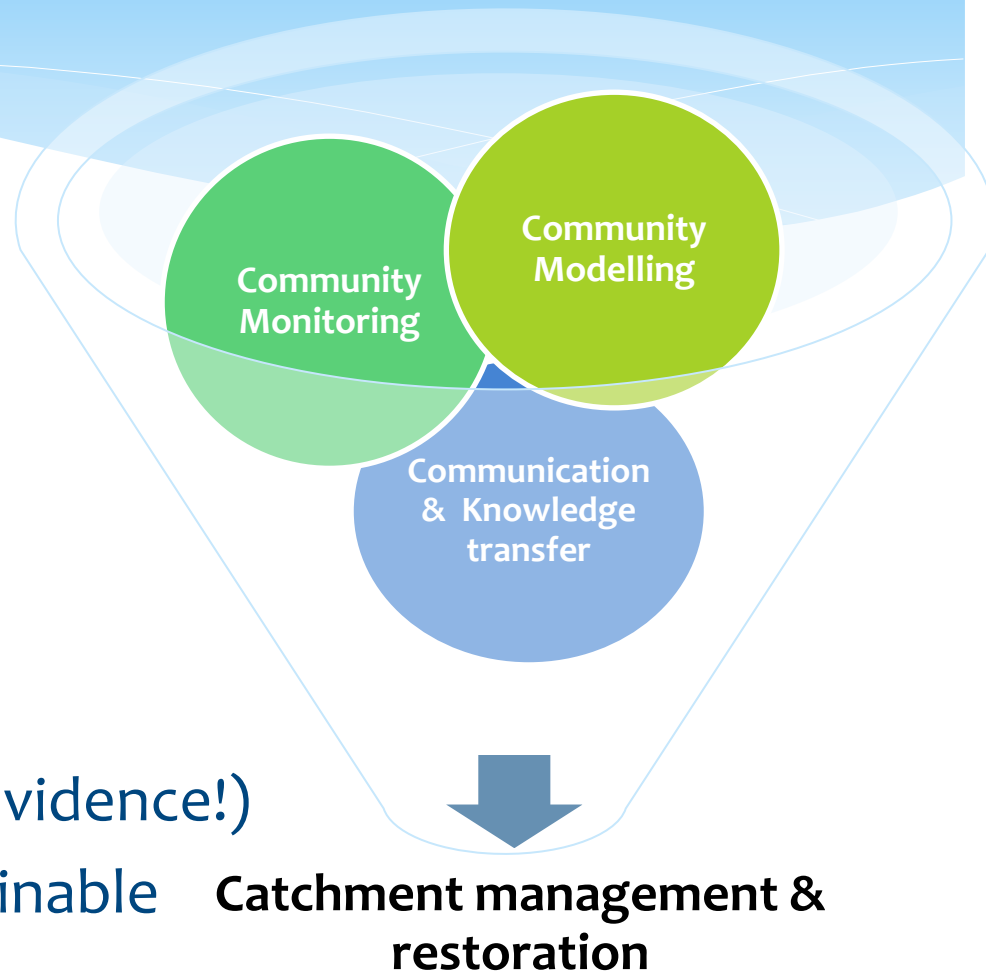
Fluker Post Project



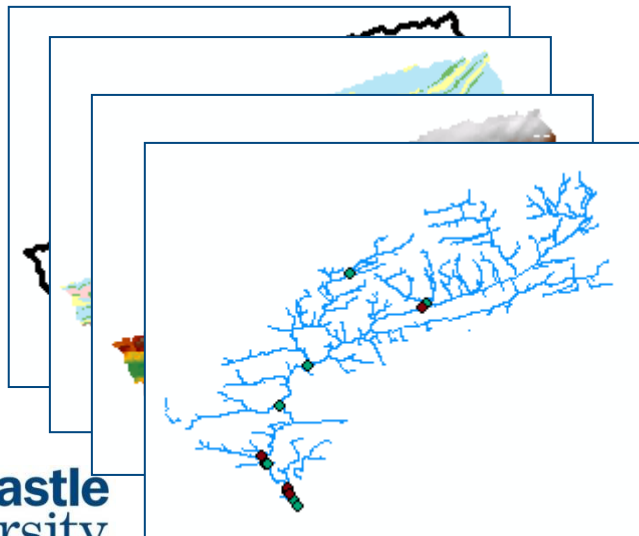
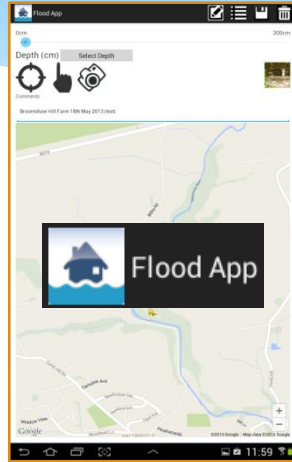
“Community monitoring and modelling for catchment management and restoration within the UK”

Benefits of ‘citizen science’

- Technology
- Involve anyone
- Public engagement
- Knowledge exchange
- Learning experience
- Simple & low-cost
- Mass participation (lots of evidence!)
- Feasible, innovative & sustainable



Progress to date – Haltwhistle Burn Project



Progress to date – Haltwhistle Burn Project



Retweeted by Haltwhistle Burn



My Weather @My_Weather · Jan 13

@HaltwhistleBurn The #Weather in #Haltwhistle is currently Partly Cloudy and
60.1 Max 50.1 Min 30.0 #Haltwhistle



Retweeted by Haltwhistle Burn



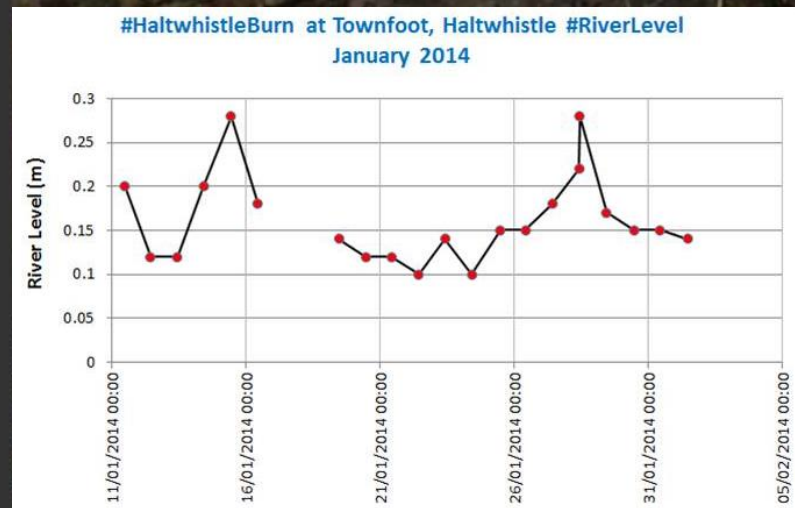
Marjorie Baillie @WalkHaltwhistle · Jan 19



westjes @westjes

@HaltwhistleBurn #HaltwhistleBurn #RiverLevel Townfoot 7/2/14
10.17am twitpic.com/duosrc

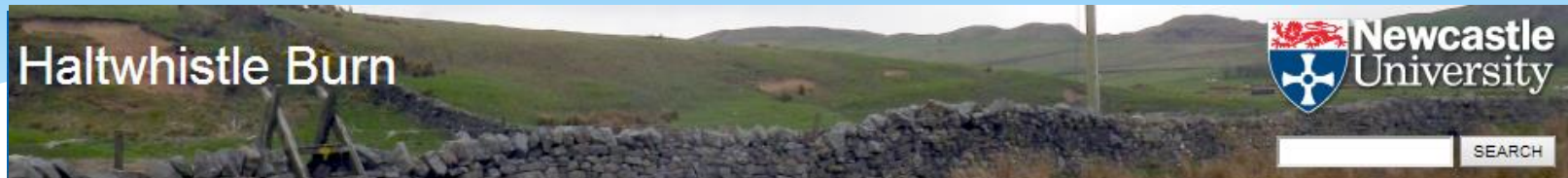
Retweeted by Haltwhistle Burn



Show Photo Details



Progress to date – Haltwhistle Project



[Project Background](#) [About the Catchment](#) [COMMUNITY HUB](#) [Volunteer](#) [Gallery](#) [News & Events](#) [Further Links](#) [Contact](#)

COMMUNITY HUB

[Know Your Catchment](#)

[Evidence of Catchment Issues](#)

[Archive: Catchment Data Records](#)

[MONITORING - Catchments Current Status](#)

[Weather & Flood Forecasts](#)

[Download Maps](#)

Follow Haltwhistle Burn on Twitter to receive project updates and be part of the knowledge regeneration project!

We will look out for the following hashtags and key words (so please use them too!):

#Haltwhistle #HaltwhistleBurn #Flood #RiverLevel #WaterQuality #Rainfall #Sediment #Veather

Tweets

[Follow](#)



westjes @westjes

5h

[@HaltwhistleBurn](#) [#HaltwhistleBurn](#) [#RiverLevel](#) Townfoot 7/2/14
10.17am [twitpic.com/duosrc](#)

Retweeted by Haltwhistle Burn



Website: <http://research.ncl.ac.uk/haltwhistleburn/>

Community monitoring – volunteer and become a citizen scientist

- Community monitoring plan – introduce 27th Feb 2014

Who to target?

**Committed,
trained and
permanent river
watch group**

+

**Fixed local
stakeholders**

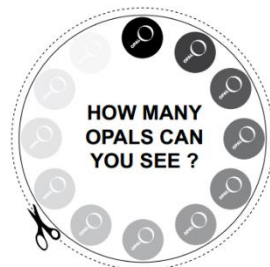
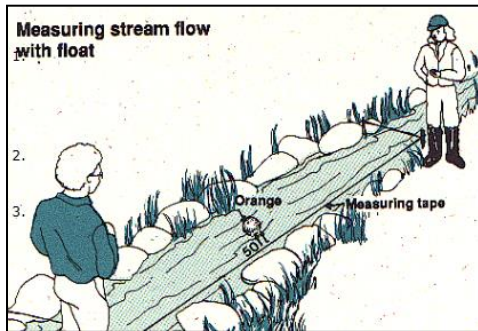
+

**Anyone /
Public**

- Monitor the whole catchment, as often as possible
- All catchment issues & any interventions
- Most valuable information – extreme events

Community monitoring – volunteer and become a citizen scientist

- Examples of monitoring activities..



Next steps..

- Request for local knowledge - Informal discussions to follow
- Sign up and become a citizen scientist / TRT volunteer
- River Watch Group meeting Feb 27th 2014, 7pm.
- Please keep in touch & spread the word!

Email: eleanor.starkey@ncl.ac.uk

Website: <http://research.ncl.ac.uk/haltwhistleburn/>



Follow @HaltwhistleBurn